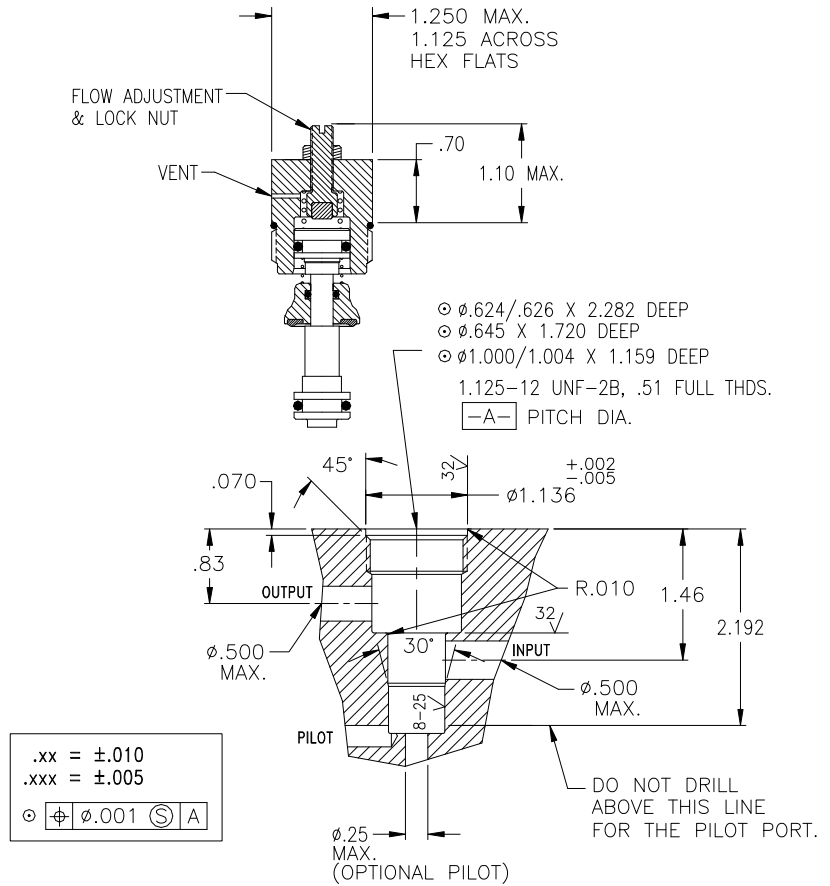
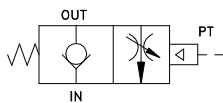


Pneumatic Cartridge Valve with Flow Control for a Manifold, Cv=2.6

- High Flow
- Flow Control
- .000113 cc/min Leak Rate
- Insert From One Side
- Easy Repair

Basic Operation:

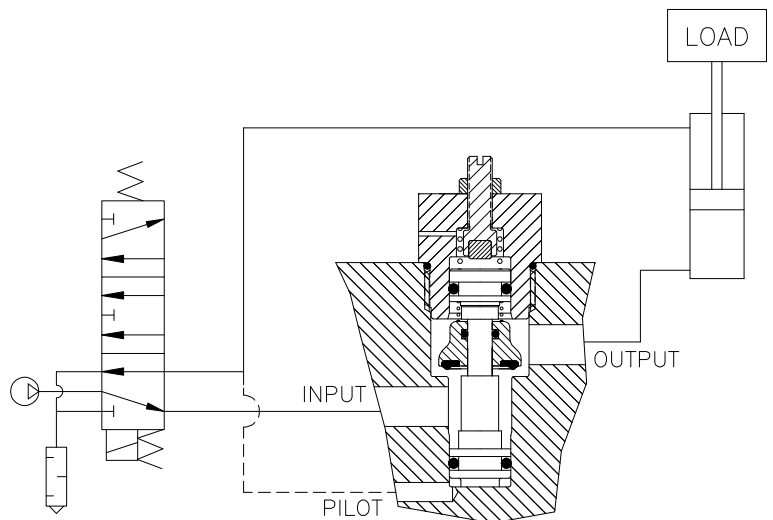
Lock your pneumatic device in position when a pressure drop or total loss of pressure occurs. Air flow is metered from the Output to the Input port.



No. of Turns	Equivalent Diameter (in.)	No. of Turns	Equivalent Diameter (in.)
.25	.15	1.25	.34
.50	.21	1.50	.37
.75	.26	1.75	.40
1.0	.30		

Operating Data:

Max. Pressure: 150 psi
Min. Pilot Pressure: 40 psi
 25 psi (K18 suffix)
Leak Rate: .000113 cc/min
Temp. Range: -20 to 150 F (Nitrile)
Cycle Rate: 1 cyc./sec. max.
Max. Flow Capacity (Cv): 2.6
Cracking Pressure: 1-3 psi
Service: Properly filtered dry air or lubricated air.



Description	Model
Cartridge, Adjustable Cap, & Spring	BC4MNFL
Cartridge, Adjustable Cap, & Low Pressure Spring	BC4MNFLK18

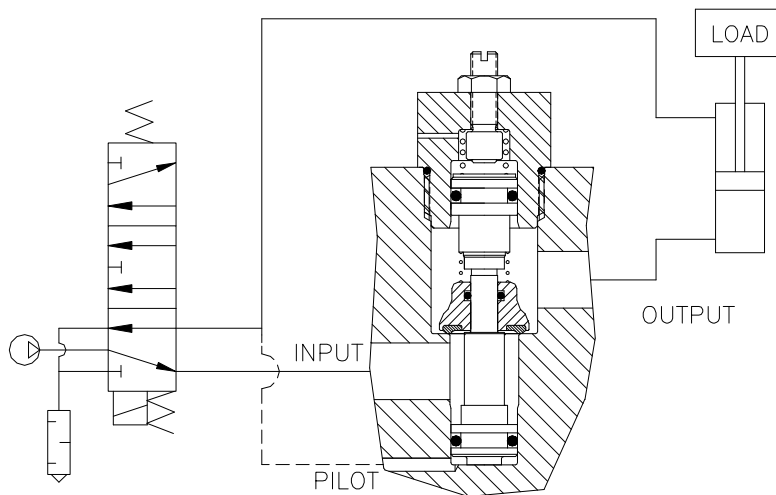
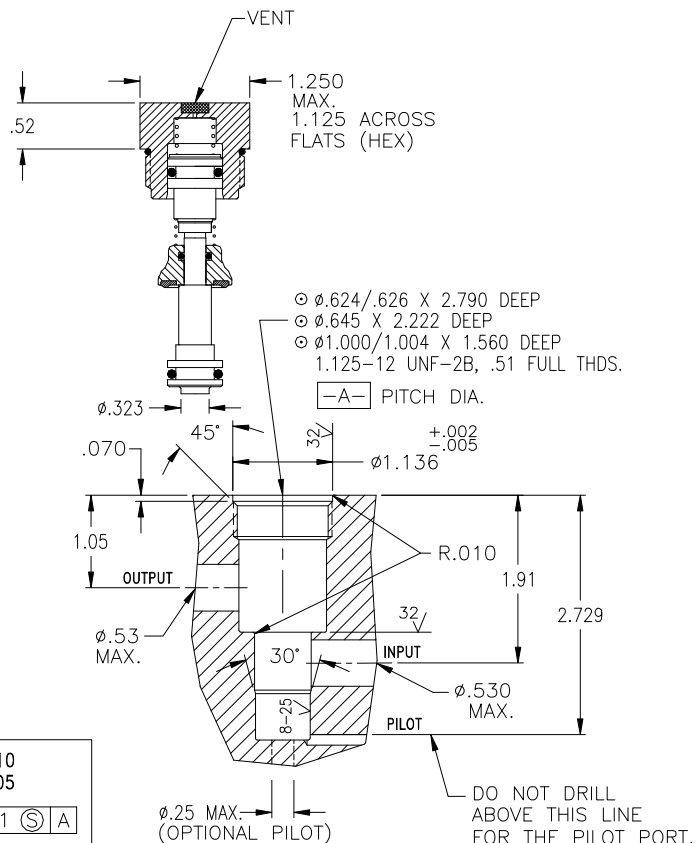
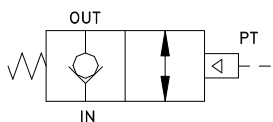


Pneumatic Cartridge Valve for a Manifold, Cv=4

- High Flow
- High & Low Temp
- .000113 cc/min Leak Rate
- Insert From One Side
- Easy Repair

Basic Operation:

Lock your pneumatic device in position when a pressure drop or total loss of pressure occurs.



Operating Data:

- Max. Pressure: 150 psi
- Min. Pilot Pressure: 40 psi
- 25 psi (see table)
- Leak Rate: .000113 cc/min
- Temp. Range: -20 to 150 F (Nitrile)
 30 to 350 F (FKM)
 -40 to 150 F (EPDM)
- Cycle Rate: 1 cyc./sec. max.
- Max. Flow Capacity (Cv): 4.0
- Cracking Pressure: 1-3 psi
- Service: Properly filtered dry air or lubricated air.

Description	Standard	Low Temp*	High Temp
Cartridge, End Cap & Spring	BC5MNAS	BC5MNAS40	BC5MNASV
Cartridge & Spring	BC5MN	BC5MNT40	BC5MNV

* No petroleum based lubricants. Comes lubricated with a silicone based lubricant. Add (-K18) to the model number for a lower pilot pressure (Ex: BC5MNAS-K18).

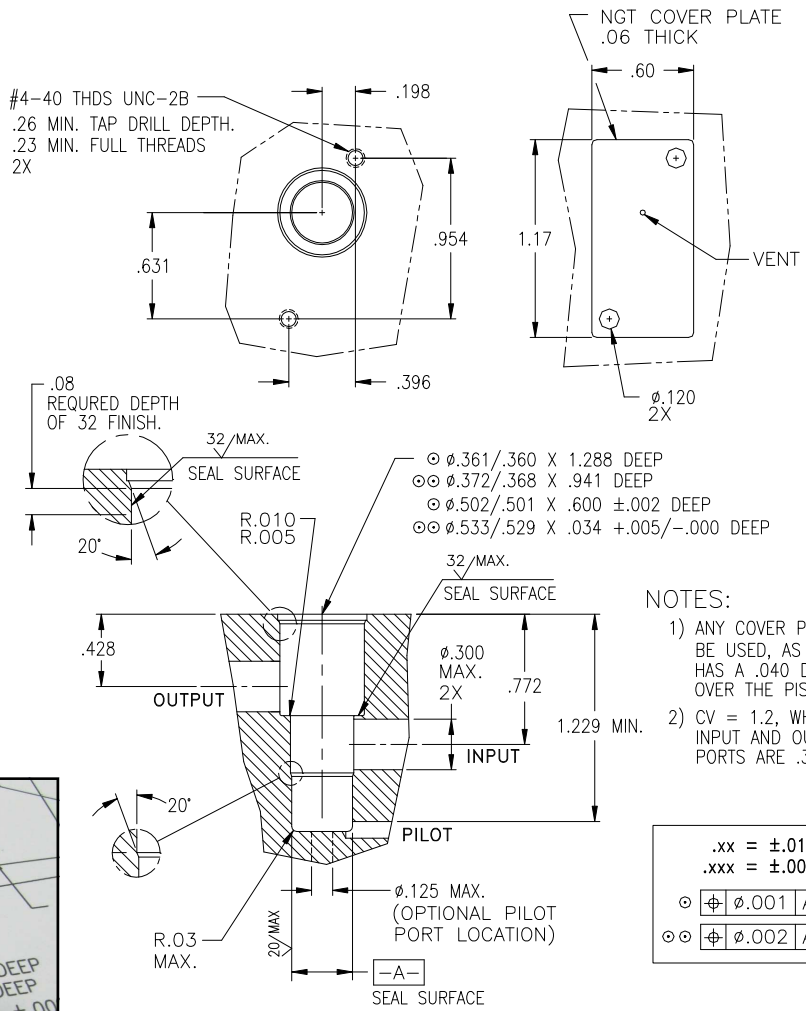
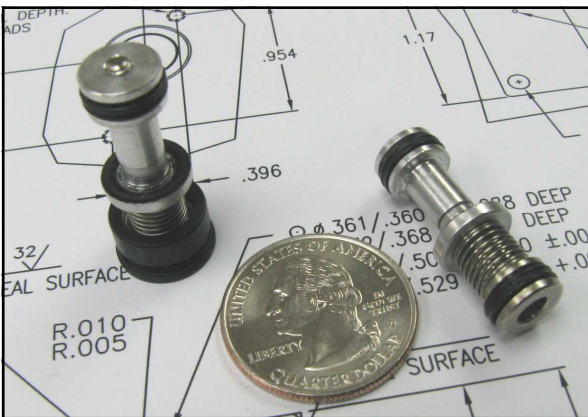
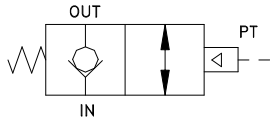


Pneumatic Cartridge Valve for a Manifold, Cv=1.2

- **.000113 cc/min Leak Rate**
- **Inserts From One Side**
- **Easy Repair**
- **Small Size**

Basic Operation:

Lock your pneumatic device in position when a pressure drop or total loss of pressure occurs. Good for leak testing. Insert a cartridge assembly into a machined cavity and attach a cover for easy assembly.



NOTES:

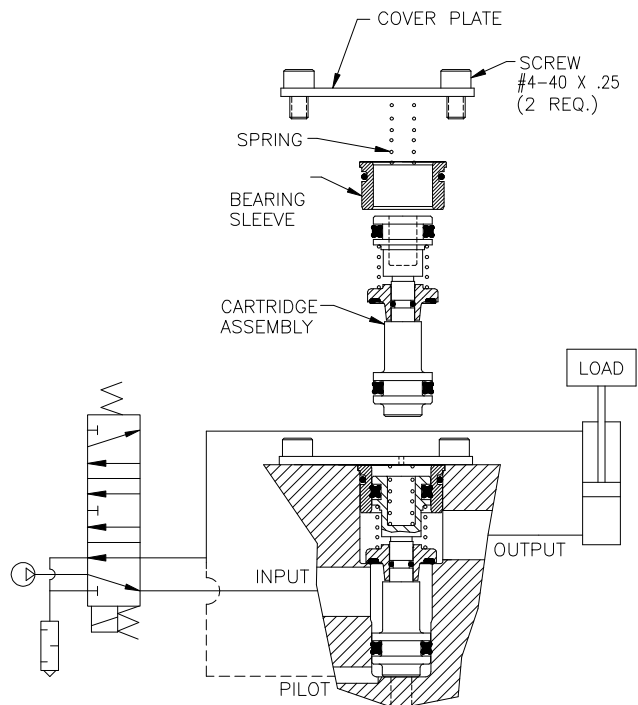
- 1) ANY COVER PLATE CAN BE USED, AS LONG AS IT HAS A .040 DIA VENT OVER THE PISTON BORE.
- 2) CV = 1.2, WHEN INPUT AND OUTPUT PORTS ARE .300 DIA.

.xx	= ±.010
.xxx	= ±.005
⊙	⊕ φ.001 A
⊙⊙	⊕ φ.002 A

Operating Data:

Max. Pressure:	120 psi
Min. Pilot Pressure:	30 psi @ 80 psi
Leak Rate:	.000113 cc/min
Temp. Range:	30 - 150 F
Cycle Rate:	1 cyc./sec. max.
Max. Flow Capacity (Cv):	1.2
Cracking Pressure:	2-3 psi
Service:	Properly filtered dry air or lubricated air.

Description	Standard
Cartridge, Bearing, Cover, Spring & Screws	BC1MNAS
Cartridge, Bearing & Spring	BC1MN

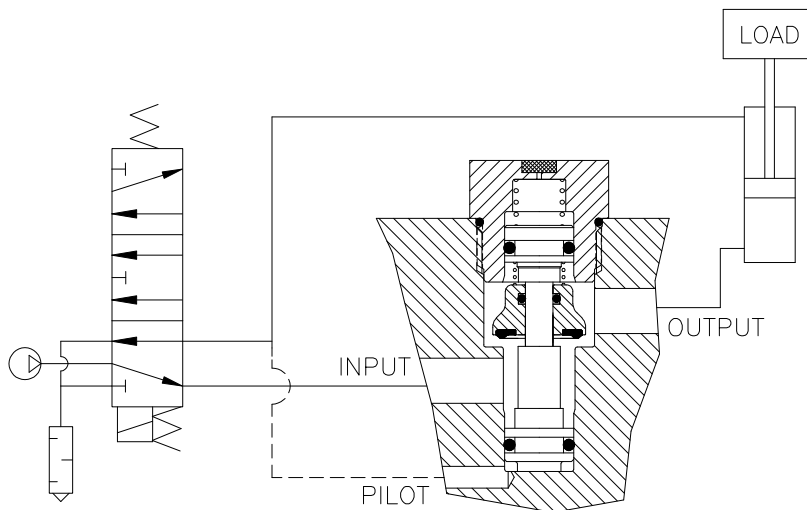
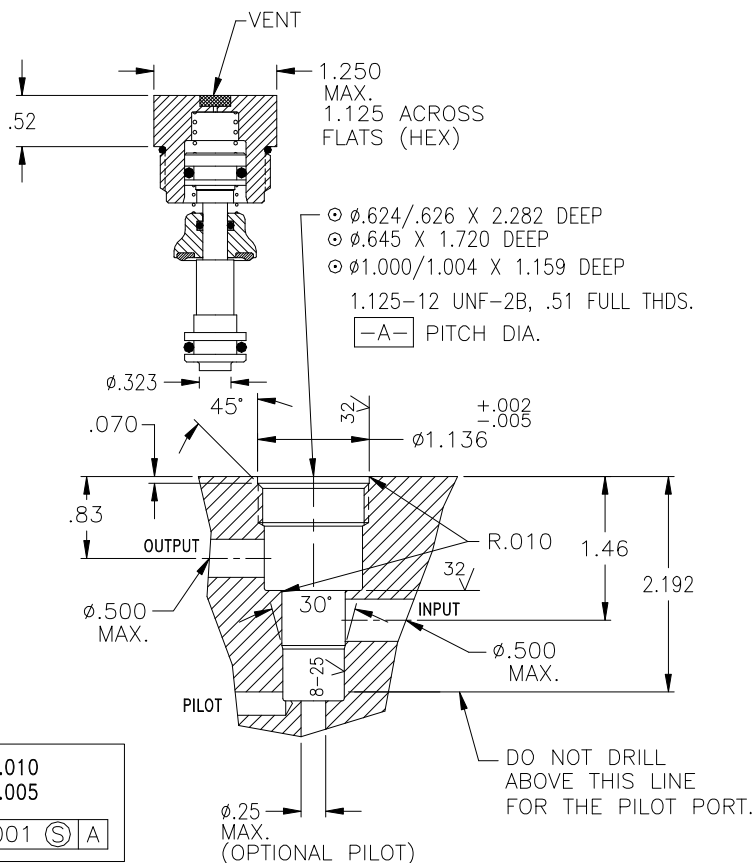
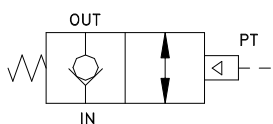


Pneumatic Cartridge Valve for a Manifold, Cv=2.6

- High Flow
- High & Low Temp
- .000113 cc/min Leak Rate
- Insert From One Side
- Easy Repair

Basic Operation:

Lock your pneumatic device in position when a pressure drop or total loss of pressure occurs.



Operating Data:

- Max. Pressure: 150 psi
 Min. Pilot Pressure: 40 psi
 25 psi (see table)
- Leak Rate: .000113 cc/min
- Temp. Range: -20 to 150 F (Nitrile)
 30 to 350 F (FKM)
 -40 to 150 F (EPDM)
- Cycle Rate: 1 cyc./sec. max.
- Max. Flow Capacity (Cv): 2.6
- Cracking Pressure: 1-3 psi
- Service: Properly filtered dry air or lubricated air.

Description	Standard	Low Temp*	High Temp
Cartridge, End Cap & Spring	BC4MNAS	BC4MNAS40	BC4MNASV
Cartridge & Spring	BC4MN	BC4MNT40	BC4MNV

* No petroleum based lubricants. Comes lubricated with a silicone based lubricant. Add (-K18) to the model number for a lower pilot pressure (Ex: BC4MNAS-K18).

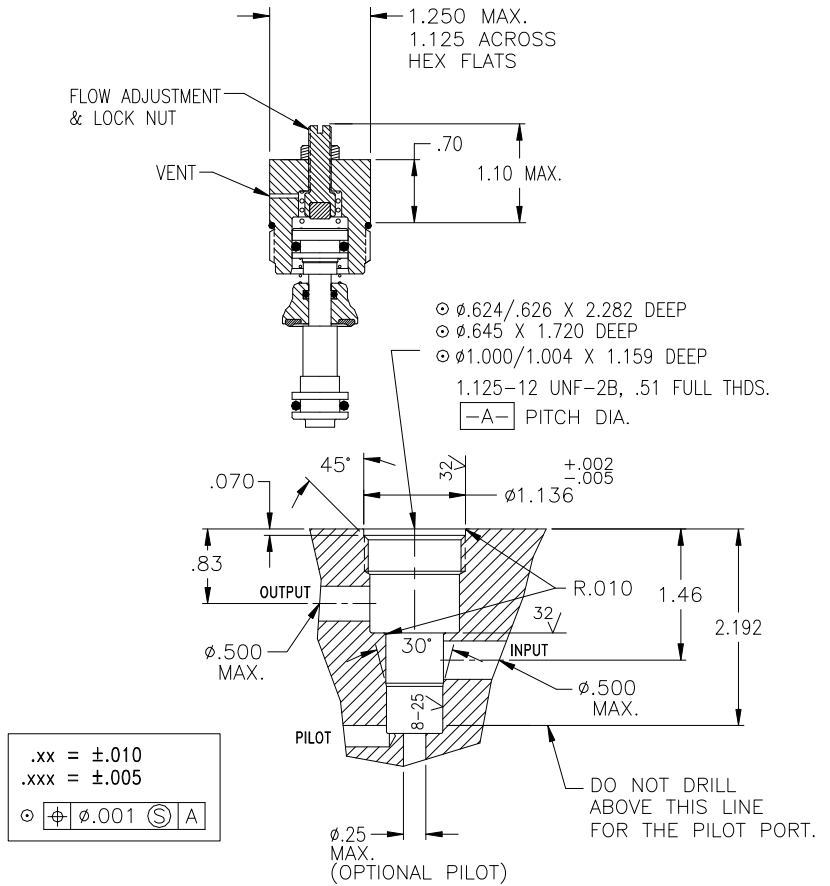
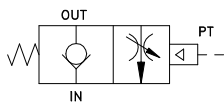


Pneumatic Cartridge Valve with Flow Control for a Manifold, Cv=2.6

- High Flow
- Flow Control
- .000113 cc/min Leak Rate
- Insert From One Side
- Easy Repair

Basic Operation:

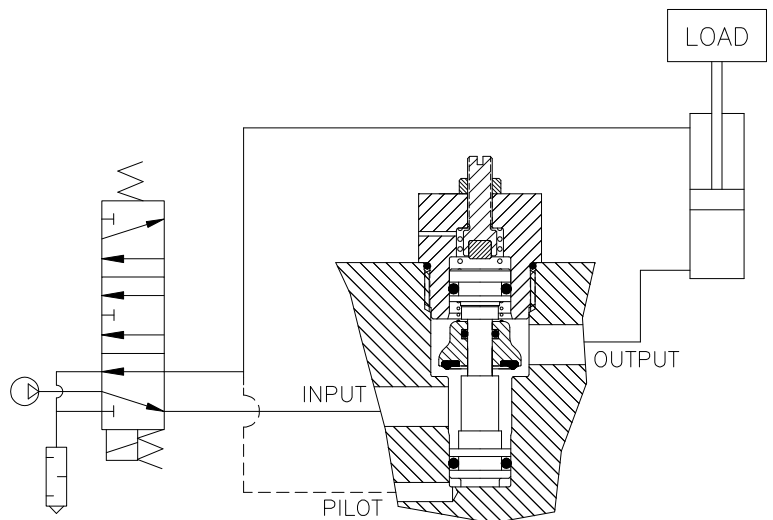
Lock your pneumatic device in position when a pressure drop or total loss of pressure occurs. Air flow is metered from the Output to the Input port.



No. of Turns	Equivalent Diameter (in.)	No. of Turns	Equivalent Diameter (in.)
.25	.15	1.25	.34
.50	.21	1.50	.37
.75	.26	1.75	.40
1.0	.30		

Operating Data:

Max. Pressure: 150 psi
Min. Pilot Pressure: 40 psi
 25 psi (K18 suffix)
Leak Rate: .000113 cc/min
Temp. Range: -20 to 150 F (Nitrile)
Cycle Rate: 1 cyc./sec. max.
Max. Flow Capacity (Cv): 2.6
Cracking Pressure: 1-3 psi
Service: Properly filtered dry air or lubricated air.



Description	Model
Cartridge, Adjustable Cap, & Spring	BC4MNFL
Cartridge, Adjustable Cap, & Low Pressure Spring	BC4MNFLK18

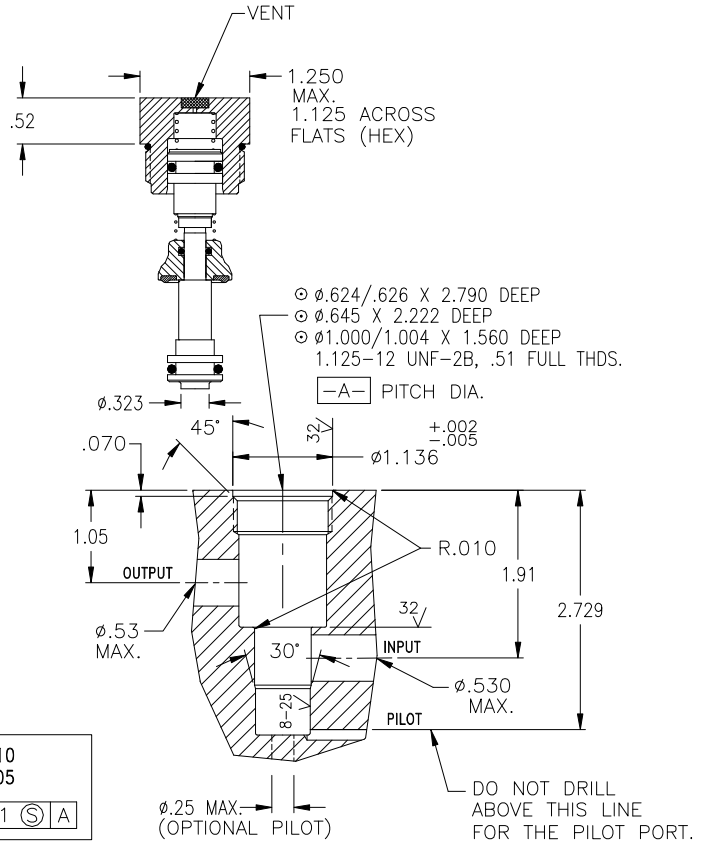
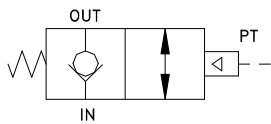


Pneumatic Cartridge Valve for a Manifold, Cv=4

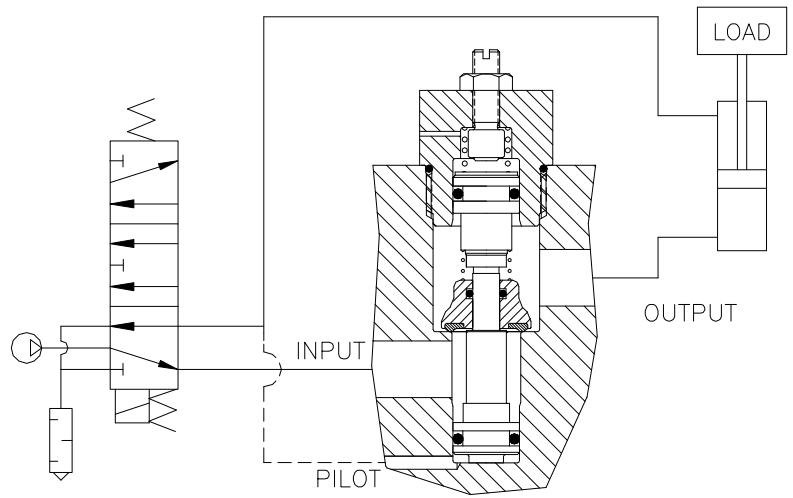
- High Flow
- High & Low Temp
- .000113 cc/min Leak Rate
- Insert From One Side
- Easy Repair

Basic Operation:

Lock your pneumatic device in position when a pressure drop or total loss of pressure occurs.



.xx = $\pm .010$
 .xxx = $\pm .005$
 $\phi \sqrt{A} \phi .001 \sqrt{A}$



Operating Data:

- Max. Pressure: 150 psi
- Min. Pilot Pressure: 40 psi
- 25 psi (see table)
- Leak Rate: .000113 cc/min
- Temp. Range: -20 to 150 F (Nitrile)
- 30 to 350 F (FKM)
- 40 to 150 F (EPDM)
- Cycle Rate: 1 cyc./sec. max.
- Max. Flow Capacity (Cv): 4.0
- Cracking Pressure: 1-3 psi
- Service: Properly filtered dry air or lubricated air.

Description	Standard	Low Temp*	High Temp
Cartridge, End Cap & Spring	BC5MNAS	BC5MNAS40	BC5MNASV
Cartridge & Spring	BC5MN	BC5MNT40	BC5MNV

* No petroleum based lubricants. Comes lubricated with a silicone based lubricant. Add (-K18) to the model number for a lower pilot pressure (Ex: BC5MNAS-K18).

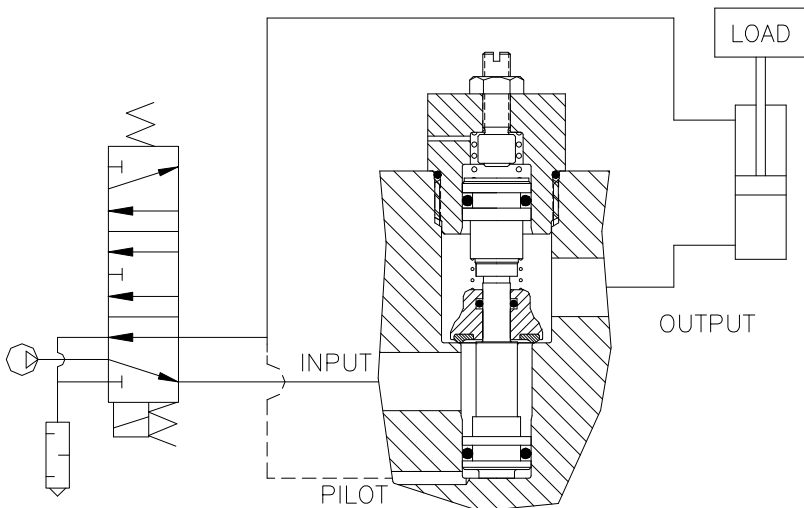
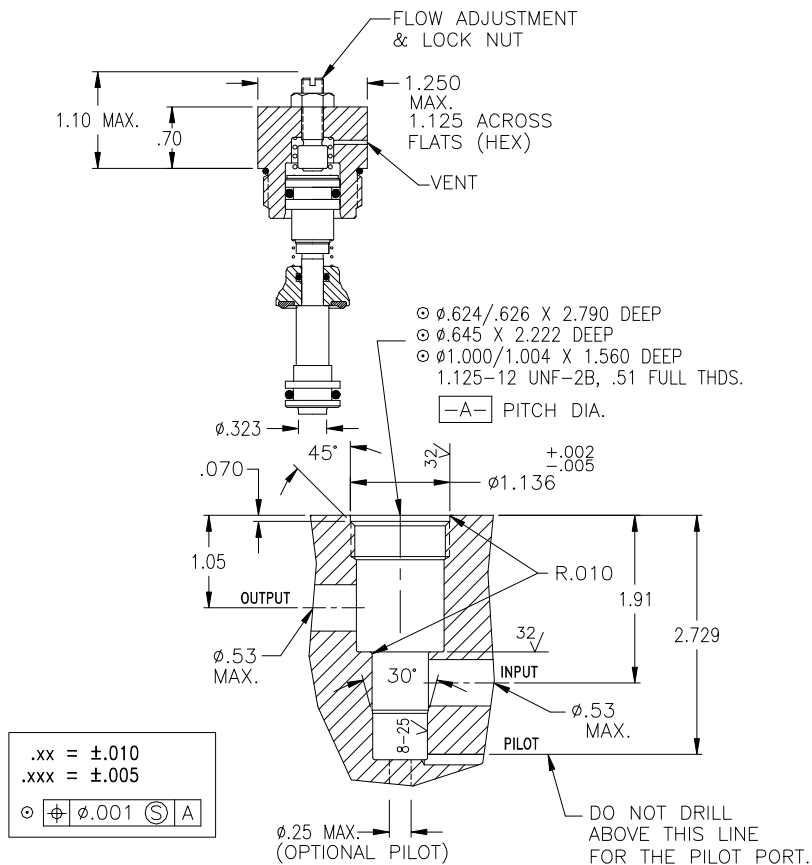
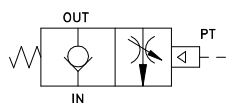


Pneumatic Cartridge Valve with Flow Control for a Manifold, Cv=4

- High Flow, Cv=4 Max.
- Flow Control
- .000113 cc/min Leak Rate
- Insert From One Side
- Easy Repair

Basic Operation:

Lock your pneumatic device in position when a pressure drop or total loss of pressure occurs. Air flow is metered from the Output to the Input port.



No. of Turns	Equivalent Diameter (in.)	No. of Turns	Equivalent Diameter (in.)
.25	.15	1.75	.40
.50	.21	2.00	.43
.75	.26	2.25	.46
1.0	.30	2.50	.48
1.25	.34	2.75	.50
1.50	.37	3.00	.53

Operating Data:

Max. Pressure: 150 psi

Min. Pilot Pressure: 40 psi
25 psi (K18 suffix)

Leak Rate: .000113 cc/min

Temp. Range: -20 to 150 F (Nitrile)

Cycle Rate: 1 cyc./sec. max.

Max. Flow Capacity (Cv): 4.0

Cracking Pressure: 1-3 psi

Service: Properly filtered dry air or lubricated air.

Description	Model
Cartridge, Adjustable Cap, & Spring	BC5MNFL
Cartridge, Adjustable Cap, & Low Pressure Spring	BC5MNFLK18

