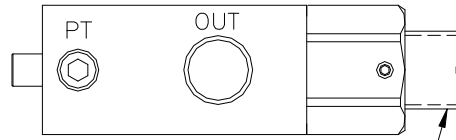
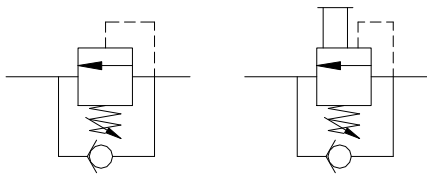


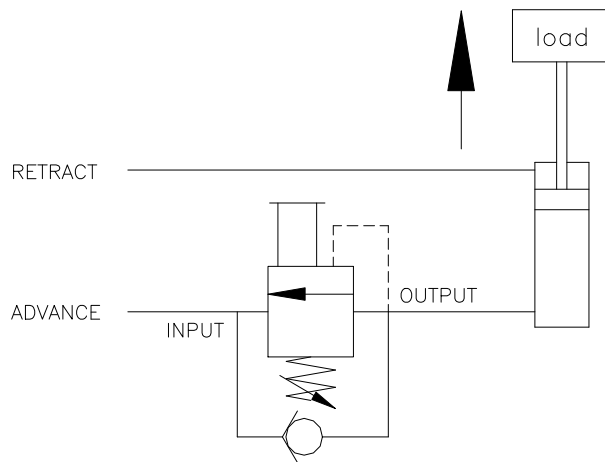
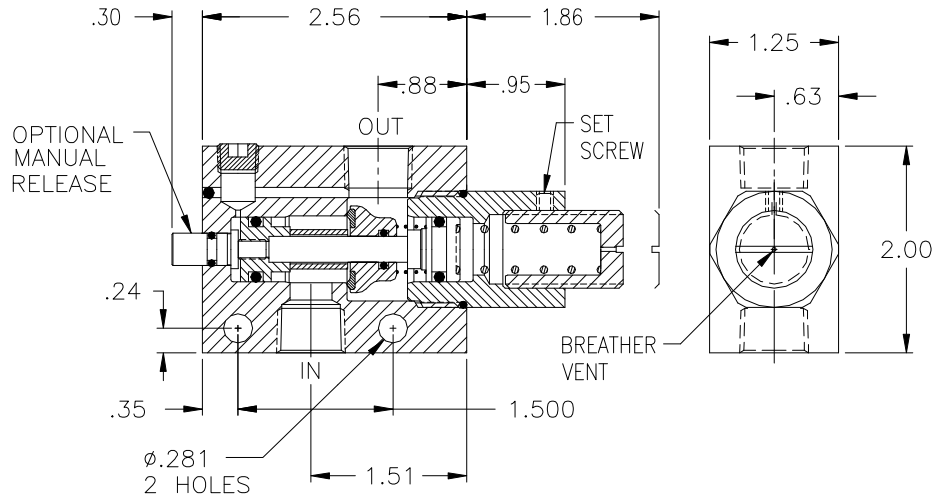
- **Optional Manual Release**
- **.0000522 cc/min Leak Rate**
- **Adjustable Load Setting**

Basic Operation:

The counterbalance valve will hold a load in position until pressure or an external force is applied to move the load. Turning the adjusting screw clockwise will increase the load carrying capacity of the valve. Optional manual and flush manual release.



PORT SIZES	
INPUT	OUTPUT
1/4 NPTF	1/4 NPTF
3/8 NPTF	3/8 NPTF
G1/4 BSPP	G1/4 BSPP
G3/8 BSPP	G3/8 BSPP



Operating Data:

- Max. Pressure:** 120 psi
- Leak Rate:** .0000522 cc/min.
- Temp. Range:** 30-150 F
- Cycle Rate:** 1 cyc./sec.
- Flow Capacity (Cv):** 2.6
- Cracking Pressure:** 1-2 psi
- Service:** Properly filtered and lubricated air.

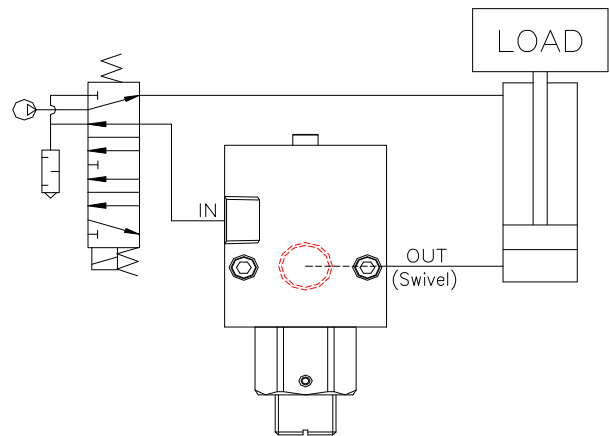
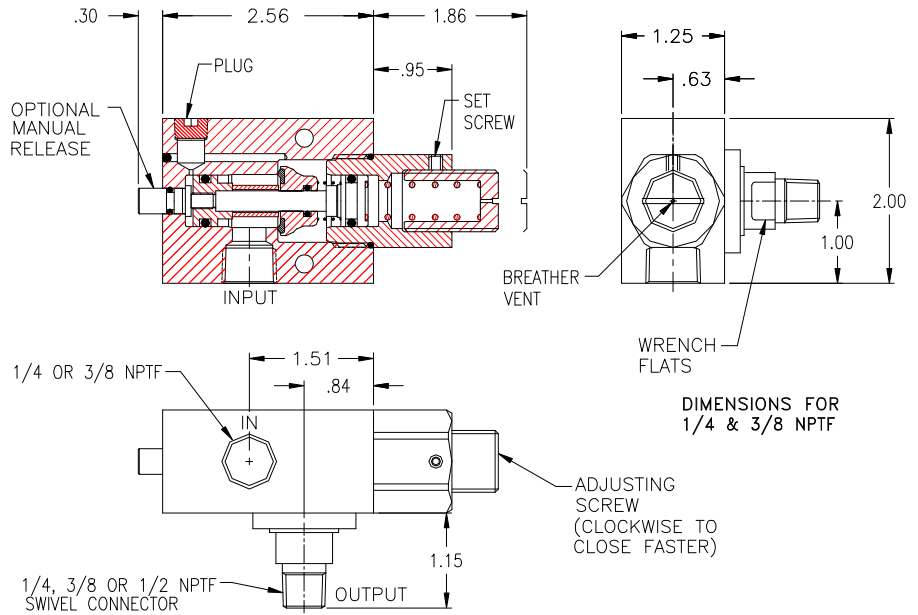
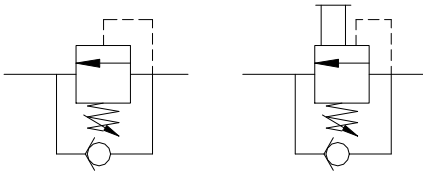
MODELS:	1/4 NPTF	3/8 NPTF	1/4 BSPP	3/8 BSPP
No Manual Release	B4MC00	B6MC00	BG4MC00	BG6MC00
Manual Release	B4MC0M	B6MC0M	BG4MC0M	BG6MC0M
Flush Release	B4MCFM	B6MCFM	BG4MCFM	BG6MCFM



- **Optional Manual Release**
- **.0000522 cc/min Leak Rate**
- **Adjustable Load Setting**
- **Direct Mounting Swivel**

Basic Operation:

The counterbalance valve will hold a load in position until pressure or an external force is applied to move the load. Turning the adjusting screw clockwise will increase the load carrying capacity of the valve. Optional manual and flush manual release.



Operating Data:

Max. Pressure: 120 psi
Leak Rate: .0000522 cc/min.
Temp. Range: 30-150 F
Cycle Rate: 1 cyc./sec.
Flow Capacity (Cv): 2.6
Cracking Pressure: 1-2 psi
Service: Properly filtered and lubricated air.

MODELS			
<i>1/4 NPTF Input Port</i>			
	1/4 Swivel	3/8 Swivel	1/2 Swivel
No Manual Release	B4SC00-25	B4SC00-38	B4SC00-50
Manual Release	B4SC0M-25	B4SC0M-38	B4SC0M-50
Flush Release	B4SCFM-25	B4SCFM-38	B4SCFM-50

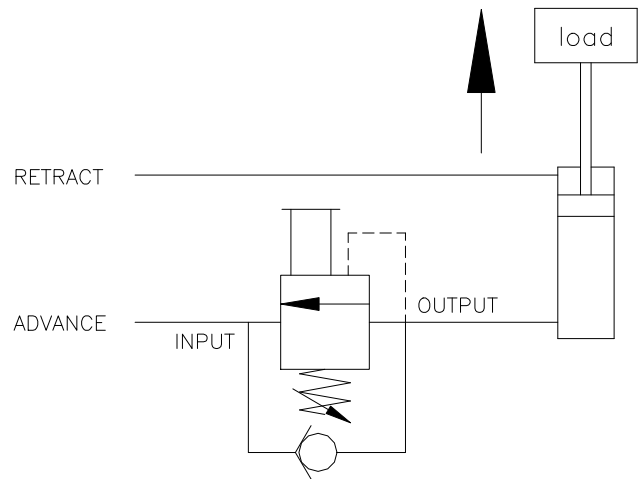
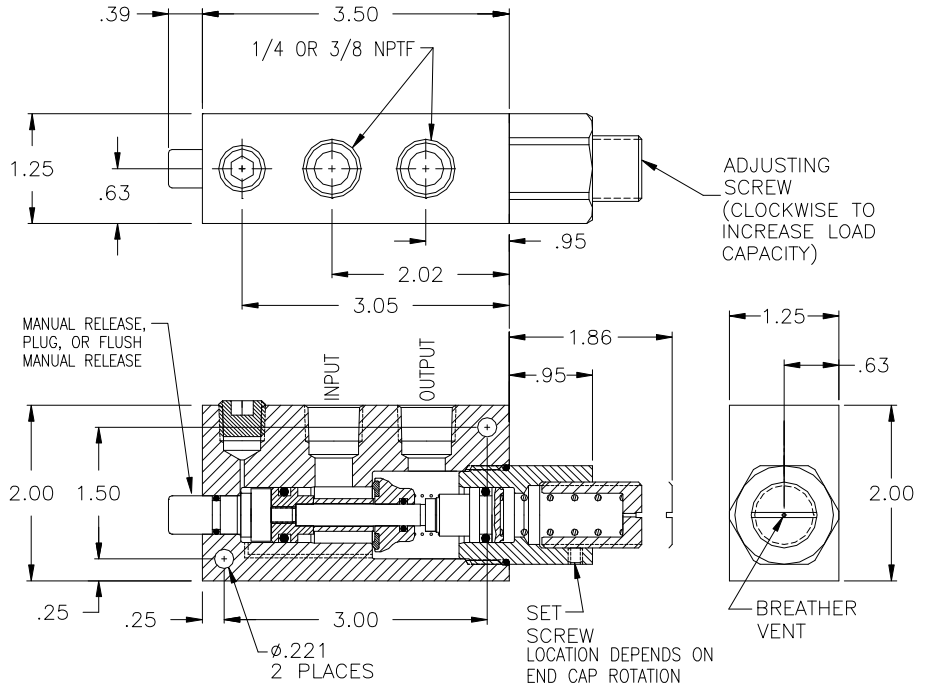
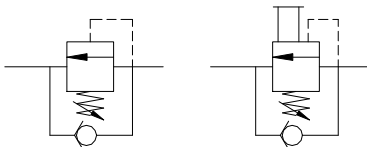
<i>3/8 NPTF Input Port</i>			
	1/4 Swivel	3/8 Swivel	1/2 Swivel
No Manual Release	B6SC00-25	B6SC00-38	B6SC00-50
Manual Release	B6SC0M-25	B6SC0M-38	B6SC0M-50
Flush Release	B6SCFM-25	B6SCFM-38	B6SCFM-50



- **Optional Manual Release**
- **.0000522 cc/min Leak Rate**
- **Adjustable Load Setting**

Basic Operation:

The counterbalance valve will hold a load in position until pressure or an external force is applied to move the load. Turning the adjusting screw clockwise will increase the load carrying capacity of the valve. Optional manual and flush manual release.



Operating Data:

Max. Pressure: 120 psi
Leak Rate: .0000522 cc/min.
Temp. Range: 30-150 F
Cycle Rate: 1 cyc./sec.
Flow Capacity (Cv): 2.6
Cracking Pressure: 1-2 psi
Service: Properly filtered and lubricated air.

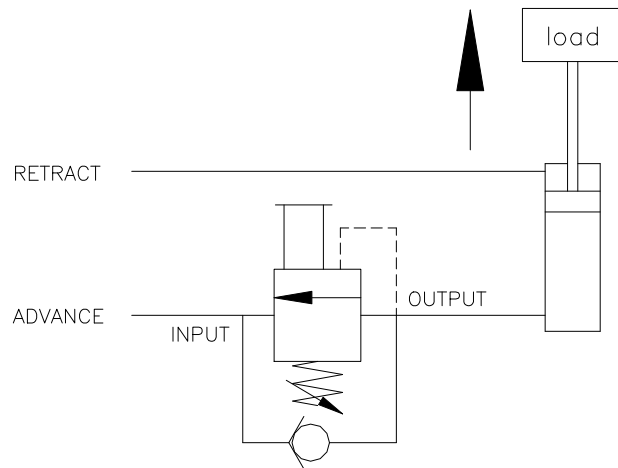
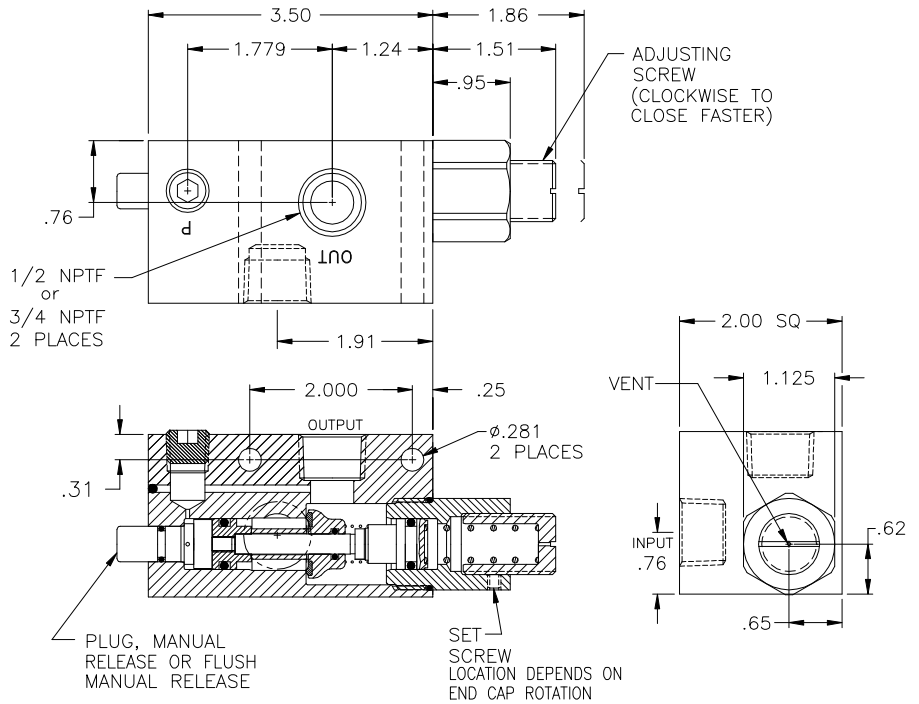
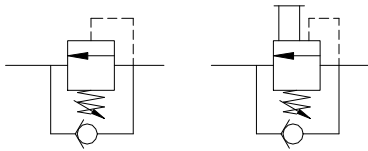
MODELS:	1/4 NPTF	3/8 NPTF
No Manual Release	B41C00	B61C00
Manual Release	B41C0M	B61C0M
Flush Release	B41CFM	B61CFM



- **Optional Manual Release**
- **.0000522 cc/min Leak Rate**
- **Adjustable Load Setting**

Basic Operation:

The counterbalance valve will hold a load in position until pressure or an external force is applied to move the load. Turning the adjusting screw clockwise will increase the load carrying capacity of the valve. Optional manual and flush manual release.



Operating Data:

Max. Pressure: 120 psi
Leak Rate: .0000522 cc/min.
Temp. Range: 30-150 F
Cycle Rate: 1 cyc./sec.
Flow Capacity (Cv): 3.8
Cracking Pressure: 1-2 psi
Service: Properly filtered and lubricated air.

MODELS:	1/2 NPTF	3/4 NPTF
No Manual Release	B81C00	B121C00
Manual Release	B81C0M	B121C0M
Flush Release	B81CFM	B121CFM

